



Power Sports

K3 Assembly Instructions



PLEASE NOTE THAT THIS IS NOT THE OWNER'S MANUAL BUT THE ASSEMBLY INSTRUCTIONS ONLY.

BEFORE OPERATING THIS VEHICLE, MAKE SURE THAT THE OPERATOR AND PASSENGER HAVE READ AND UNDERSTAND THE OWNER'S MANUAL, WARNING LABELS AND ARE FAMILIAR WITH ALL OF THIS BUGGY CONTROLS.

FOR QUESTIONS REGARDING ASSEMBLY OF THIS VEHICLE, PLEASE VISIT OUR ALIBABA'S WEBSITE

REMOVAL FROM CRATE

1. Remove metal crate from around Vehicle.

2. Locate and Remove Owner's/ Operator's manual, Set up instructions and all documentation.



Note: Read Owner's / Operator's manual thoroughly before starting Vehicle for the first time.

3. Locate and remove all parts and hardware from crate and set aside.

Note: Some hardware may already be mounted at part locations on the Vehicle. This hardware will need to be removed then re-attached during assembly.



Rear Shocks 1pc



Front Shocks 2pcs



**Steering Wheel Cap
1pc**



**Plastic Cables
5pcs**



**Battery basic
cushion 1pc**

Wheel Parts



Rear Tires 2pcs



Front Tires 2pcs



Rubber Hub Caps 4 pcs

Other Parts



Rea Fenders 2pcs



Battery 1pc



Flag 1pc



Fabric Roof 1sets.



Flag base 1pc



**Spark Plug Tools
1pc**

Brush Guard Parts



Main Brush Guards 2pcs



Brush Guard Back Supports 1pc



Brush Guard Center Supports 2pcs



Front Supports 1pc

REAR SHOCK INSTALLATION

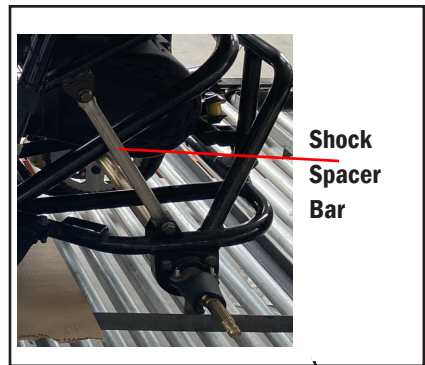
Hardware :

M10 X 40 bolts 4ea. (1)

M10 Lock Nuts 4 ea. (2)

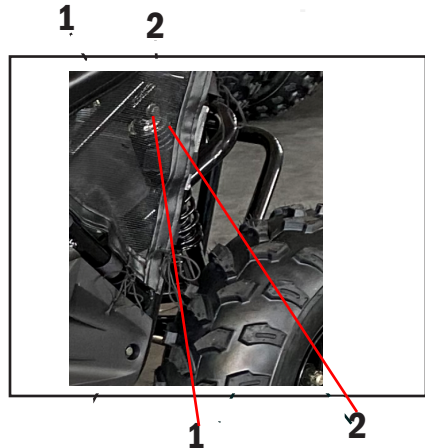


1. Locate, remove and discard shipping shock spacer bar (3). Keep nuts and bolts . The nuts and bolts will be used to attach the shock.



Note: The center of the Go-kart will need to be lifted to install shocks. This can be done with a floor jack.

2. Install shocks on each side of rear assembly. Attach shocks to shock mounts with M10 bolts (1) and Lock Nuts (2). Torque requirements of 37-44mm



Rear Shock Assembled

BATTERY INSTALLATION

1. Put the battery basic cushion in the rear swing arm battery box
2. Connect battery wire to the positive and negative electrodes of the battery. And put protector.
3. Put battery into battery box and have a battery cover on it.
4. Take out the wire from the battery Cap Slot, and finally pull the battery strip up to fix the battery.



REAR FENDER BRACKET(L/R) INSTALLATION

Hardware

GB5789 M6 X16 Flange

nut 4pcs.

WASHER GB93 6 4pcs



1. Put hole position of the rear fender bracket support

2. Each side hole top, Insert 2pcs of

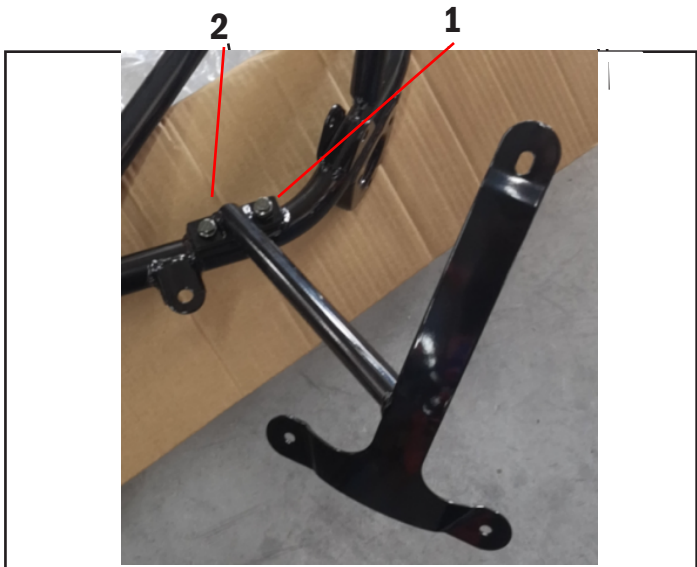
WASHER 6 and M6 x 16

FLANGE BOLT 1pc .

3. Each side hole under , Insert under

M6 Flange nut 1 pc.

4. Tighten with Torque 11-16N.m



REAR WHEEL INSTALLATION

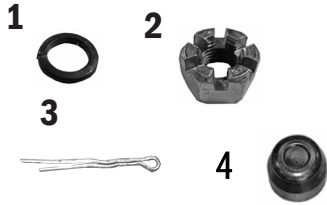
Hardware:

16* 40*3 Washer 2ea.

M16X1.5 Castle nuts 2ea.

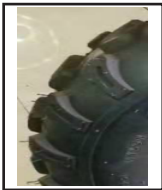
4*40 Cotter pins 2ea.

Hub Caps 2ea.

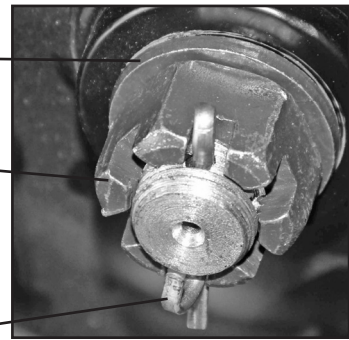
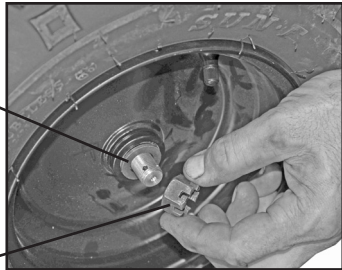


1. Install rear tires using M12 Washers (1), M12 Castle Nuts (2) and Cotter Pins (3)

Note: Make sure tire tread faces forward and Air valve stem is on the outside of the tire when installing.



Tread faces forward



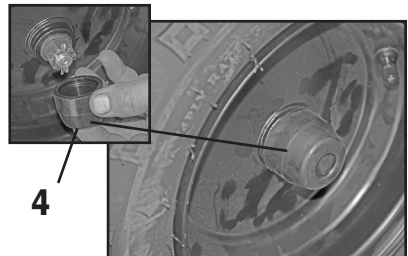
⚠ WARNING

Failing to install cotter pins could be hazardous.

Failing to install cotter pins could cause the castle nuts to fall off resulting in an accident.

Never operate machine without cotter pins installed

2. Install Hub Caps (4) by snapping on hub.



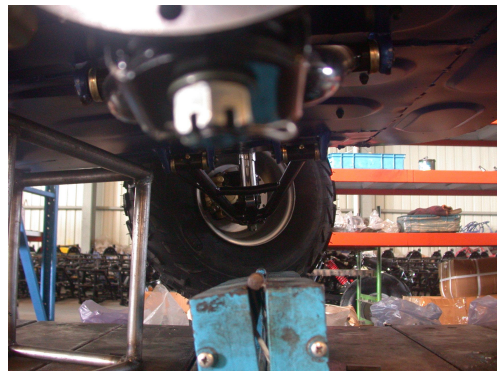
REAR FENDER (L/R) INSTALLATION

1. Install rear mudguard assembly at rear mudguard's bracket.
2. Mounting with M6 * 16 Bolts and 16 in position
3. Tighten torque should be 11-16N.m



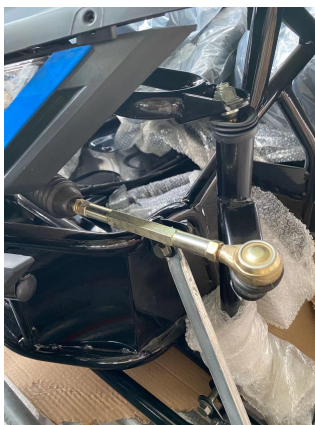
FRONT SWING ARM INSTALLATION

1. Lift the front part of machine with a rack, remove the nut and gasket from the ball head of the steering arm.
2. Assemble the ball head of the steering arm with the lower rocker frame. Note that the ball head is aligned with the square hole of the ball head of the cradle.
3. Install gasket and nut in sequence, torque required 37-44NM, nut tighten after the 2.5 x25 pin on the pull open



FRONT SHOCKS INSTALLATION

1. Remove the bolt from the front shock absorber
2. Install the front shock absorber on the lower arm and frame.
3. Tighten the bolt, torque requirements of 37-44NM



FRONT WHEEL INSTALLATION

Hardware:

GB97 14 2ea.

GB96 16X 40X3 2ea.

M14*1.5 Castle nuts 2ea.

Cotter pins 2.5*25 2ea.

Hub Caps 2ea.



1. Install front tires using GB97

14 (1), GB96 16X 40X3

AND M14*1.5 Castle nuts

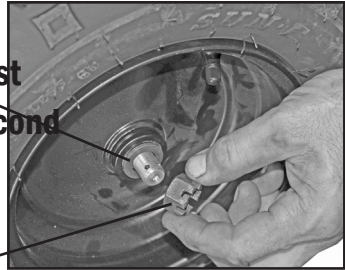
AND Cotter Pins 2.5*25

(4)Note: Make sure tire tread faces forward and Air valve stem is on the outside of the tire when installing.

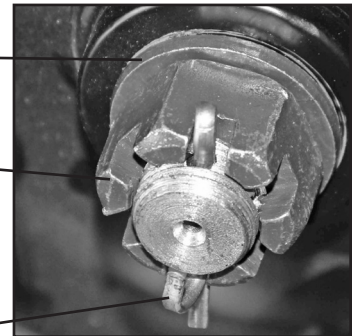


Tread
faces
forward

1 First
2 Second



3



3

4

⚠ WARNING

Failing to install cotter pins could be hazardous.

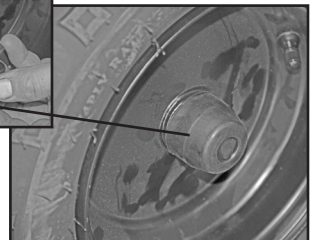
Failing to install cotter pins could cause the castle nuts to fall off resulting in an accident.

Never operate machine without cotter pins installed

2. Install Hub Caps (5) by snapping on hub assembly.



5



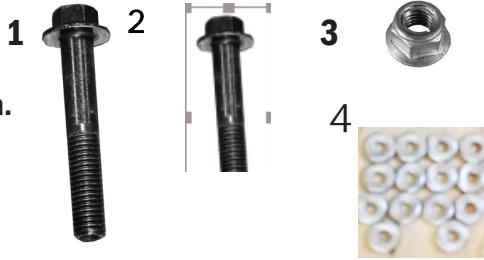
BRUSH GUARD INSTALLATION

M8X55 bolts 10ea.

M8X16 bolts 8ea.

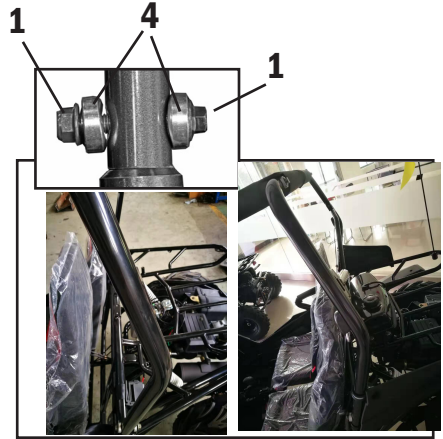
GB6187 M8 Lock Nuts 4ea.

R Washers 14ea.



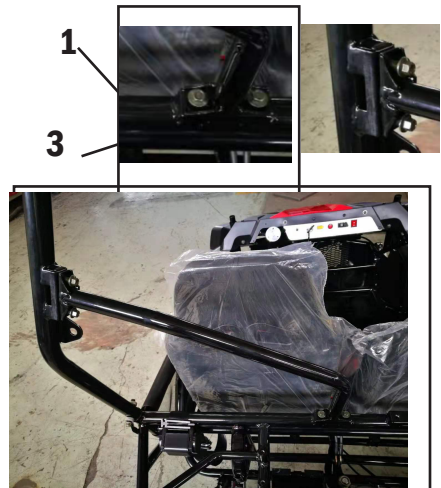
1. Attach Back Brush Guards with M8X55 bolts (1) , R Washer (4) and Lock Nuts (2).

Note: Do not tighten bolts at this time, keep bolts loose until the brush guard is completely assembled.



2. Attach the decorative guards with the M8 * 55 Bolt on the corresponding installation position of the main pipe .

Note: Do not tighten bolts at this time, keep bolts loose until the brush guard is completely assembled.



3. Attach the front side guards: Insert the front side cage to corresponding position of the frame, use M8X55 Bolt, R Concave Spacers and m 8 nut to screw from the outside to the inside. and use M8X55 Bolt and R Concave Spacers to install the rear side guard

Note: Do not tighten bolts at this time, keep bolts loose until the brush guard is completely assembled.



4. Attach the roof guards: Use M8X55 Bolts and R Concave Spacers. Match the the front and back position.

Note: Do not tighten bolts at this time, keep bolts loose until the brush guard is completely assembled.



5. Tighten all these bolts until the brush guard is completely assembled.
Torque should be in 22-29N.m

6. Attach the fabric roof : First the roof foam pipe installed on the roof frame, and then the roof cloth cover installed on the roof frame, tension and then bonding installation in place.



STEERING WHEEL INSTALLATION

Hardware:

GB5789 M6 x 20 bolts

3 ea.

GB6187 M6 Lock

Nut 3 ea.

1



2



1. Attach steering wheel using the M6 x20 bolts (1) .



1

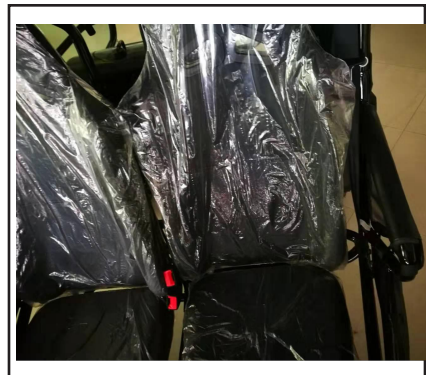
2. Attach steering wheel cap by snapping into place on center of steering wheel.

Steering Wheel Cap



SEAT BACK INSTALLATION

1. Install seat back by pulling apart velcro opening. Place Seat Back over seat back frame. Velcro together locking Seat Back in place.



FLAG INSTALLATION

1. Install the yellow flag on the flagpole, fix the flagpole on the installation position of the flagpole on the back shelf with the flagpole holder.



PRE-RIDE INSPECTION

Inspecting and checking the condition of the machine before each ride is important. Following the pre-ride check list will help insure the you do not have mechanical problems which could result in injury or becoming stranded. Make sure the Go Kart is in good operating condition before each ride.

WARNING

Failing to inspect and maintain your Go Kart could be hazardous.

Not following the pre-ride inspection procedures could result in losing control of the Go Kart resulting in an accident or damage to the Go Kart

Always perform a Pre-ride inspection before each ride.

WARNING

Performing maintenance and checks while the engine is running could be hazardous.

You could be severely injured by moving parts or hot surfaces.

Never perform maintenance or check procedures while the engine is running with the exception of checking the ignition switch or throttle.

WHAT TO CHECK	CHECK FOR
Steering	<ul style="list-style-type: none"> • Smoothness • No restriction of movement
Brakes	<ul style="list-style-type: none"> • Correct fluid level • Inspect hoses for leaks • Inspect brake pads for wear.
Tires	<ul style="list-style-type: none"> • Proper tire pressure • Proper tread depth • Rubber has no cracks
Fuel Tank	<ul style="list-style-type: none"> • Enough fuel for the ride • Fuel cap secure • Hoses have no signs of cracks or leaks
Throttle Pedal	<ul style="list-style-type: none"> • Pedal snaps back to idle when released • Operates freely
Engine Ignition switch	<ul style="list-style-type: none"> • Switch shuts off engine when activated.
Engine Oil	<ul style="list-style-type: none"> • Correct oil level
Forward/reverse lever	<ul style="list-style-type: none"> • No damage • Operates as intended
Drive Chain	<ul style="list-style-type: none"> • Proper tension • Lubricated • No excessive wear or damage
General Condition	<ul style="list-style-type: none"> • All nuts and bolts tight • No rattles from engine or frame while running

⚠ WARNING

Never Attempt to start this machine without reading and understanding the Owner's/Operator's manual. The Owner's/Operator's manual provides information on safety, parts, functions, pre-ride inspection, starting and maintenance.

