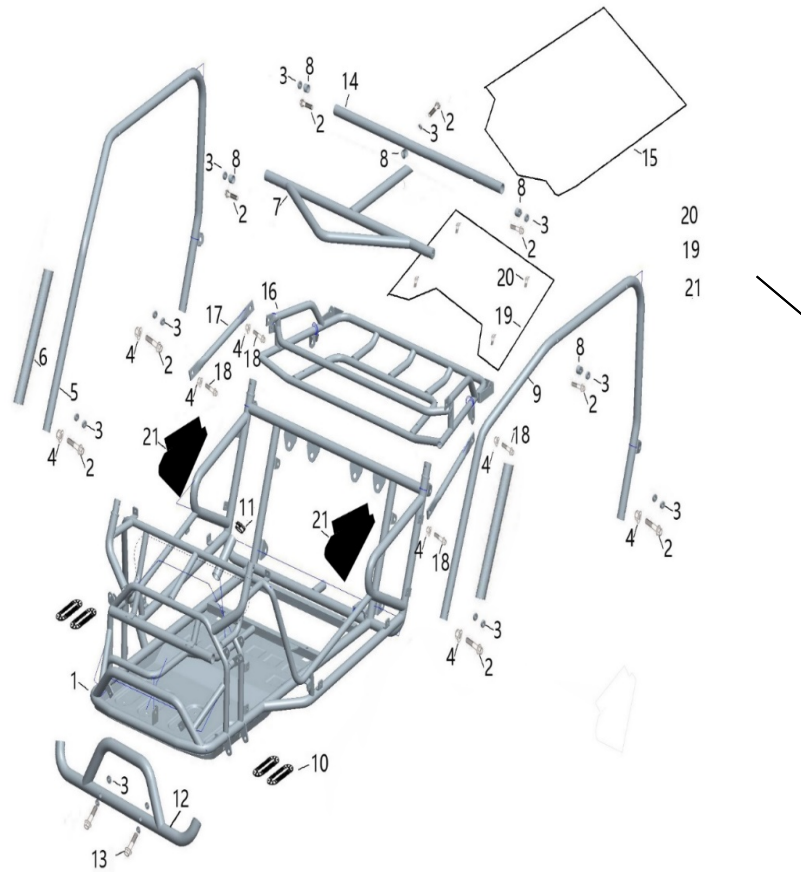




***TrailMaster* GO-KART
Cheetah i6 PARTS MANUAL**

Version: 1.0 (10/12/2023)

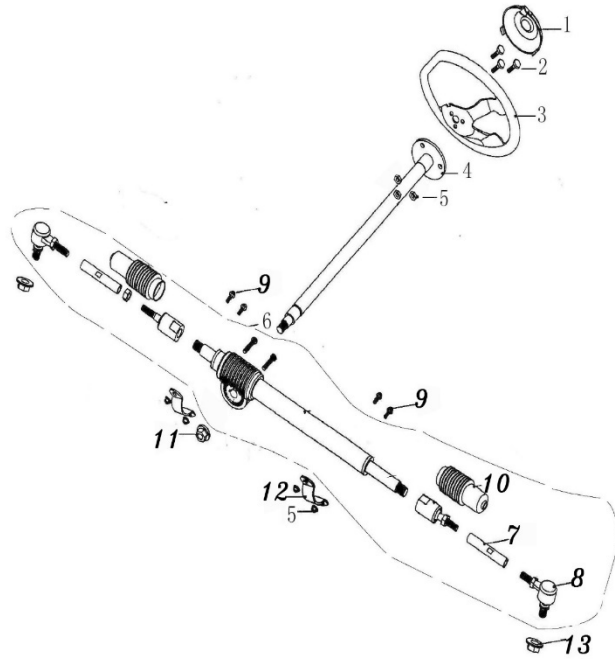
FIG. 1 FRAME GROUP



FRAME GROUP			
REF NO.	PART NO.	DESCRIPTION	QTY
1-1	57100-K1PD	FRAME COMP. (R.S.Y, P)	1
1-2	57870805012505	BOLT M8X50,GB5787	9
1-3	8010047250G000	R- WASHER	18
1-4	61870800012505	LOCKING NUT M8, GB6187	10
1-5	58110-K1P	C.B.C.CUSTOM J-BAR.R SIDE(R.S.B)	1
1-6	58005-K1P	FOAM PADDING-1	2
1-7	58410-K1P	C.B.C.CUSTOM CROSS BARTOP.FR(R.S.B)	1
1-8	58002-K1P	TUBE SEAT ϕ 22	5
1-9	58120-K1P	C.B.C.CUSTOM J-BAR.L SIDE(R.S.B)	1
1-10	58007-K1P	RUBBER FOOLPLAIE	4
1-11	7010006150G000	SWING ARM BUSH.	1
1-12	52300-K1P	PROTECTING BAR	1
1-13	57870804512505	BOLT M8X45,GB5787	2
1-14	58420-K1P	C.B.C.CUSTOM CROSS BARTOP.RR(R.S.B)	1
1-15	00010-K1P	BIKINI TOP	1
1-16	52100-K1P	REAR CAGE RACK(B.G.R.)	1
1-17	52001-K1P	RACK SUPPORT ARM (B.G.R.)	2

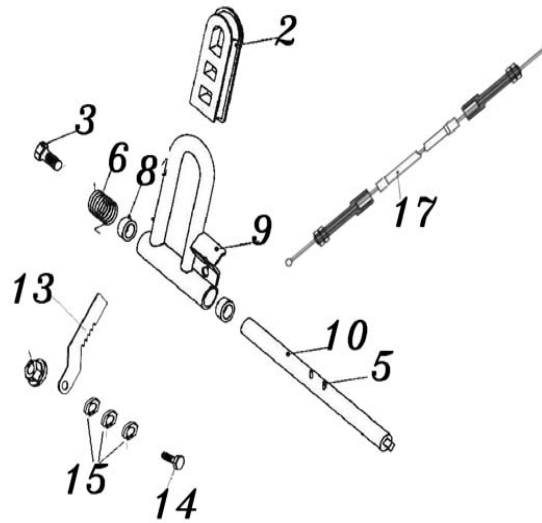
1-18	57870802012505	BOLT M8X20 ,GB5787	6
1-19	52109-K1P	Rear Shelf cover	1
1-20	90746601610005	BOLT M6X16 ,GB9074.6	4
1-21	65060-K1P	DECORATIVE NET	1

FIG. 2 STEERING SHAFT ASSY.



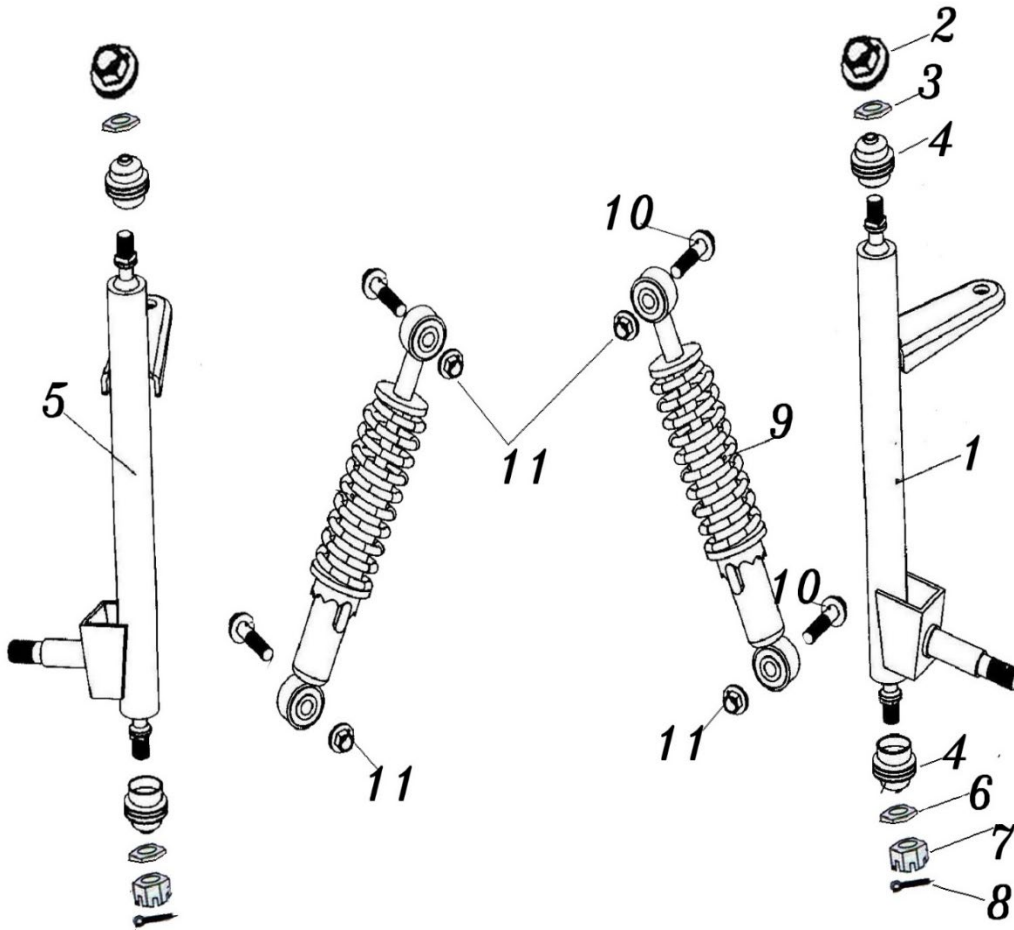
STEERING SHAFT ASSY.			
REF NO.	PART NO.	DESCRIPTION	QTY
2-1	40005-K1P	STEERING BOLT COVER	1
2-2	57890601610005	BOLT M6 x16, GB5789	3
2-3	40120-K1P	STEERING WHEEL	1
2-4	40100-K1P	STEERING-SHAFT	1
2-5	61870600010005	LOCKING NUT M6 , GB6187	7
2-6	40300-K1P	STEERING GEAR ASSY	1
2-7	40002-K1P	TIE ROD	2
2-8	6000181080G000	ROD END	2
2-9	57890602010005	BOLT M6 x25 , GB5789	4
2-10	40307-K1P	STEERING BALL JOINT DUST COVER	2
2-11	61871000012505	LOCKING NUT M10*1.25	1
2-12	8.020.130	STEERING GEAR BRACKET(R.S.B)	2
2-13	61870800012505	LOCKING NUT M8, GB6187	2

FIG. 3 BRAKE / THROTTLE PEDAL



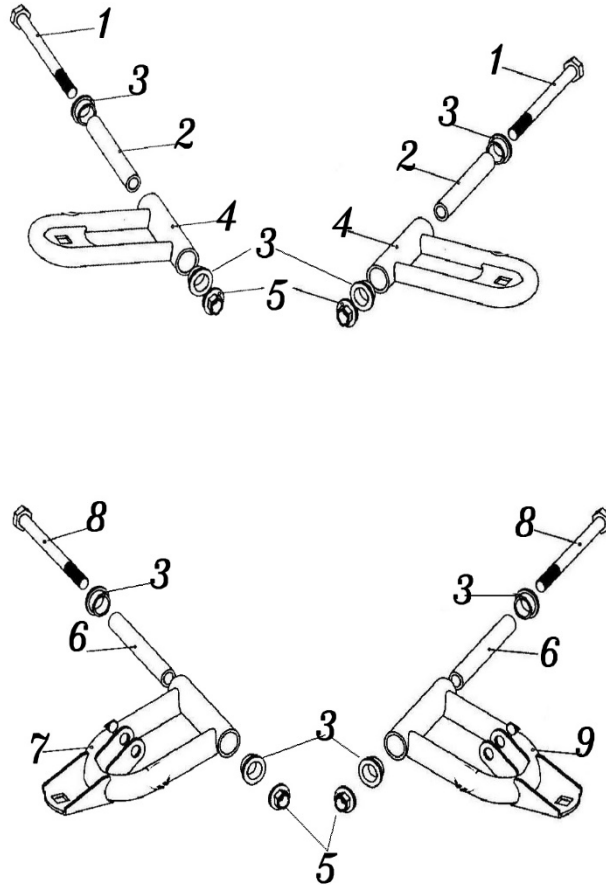
BRAKE / THROTTLE PEDAL			
REF NO.	PART NO.	DESCRIPTION	QTY
3-2	7020043080G000	BRAKE PEDAL PAD	1
3-3	57870801212505	BOLT M8X12 ,GB5787	1
3-5	87910300200000	ROLL PIN $\phi 3 \times 20$	2
3-6	8040010080G000	THROTTLE PEDAL RETURN SPRING, L	1
3-8	7010003250G000	PEDAL BUSH	2
3-9	40220-K1P	BRAKE PEDAL COMP.	1
3-10	40001-K1PD	PEDAL BOLT	1
3-13	8020209080G000	Stopping plate	1
3-14	57870803012505	BOLT M8X30 ,GB5787	1
3-15	61700800012505	NUT M8, GB6170	3
3-17	60140-K1P	BRAKE CABLE COMP.	1
3-18	6170800012505	NUT M8, GB6187	1

FIG. 4 SPINDLE AND STRUT SUPPORT



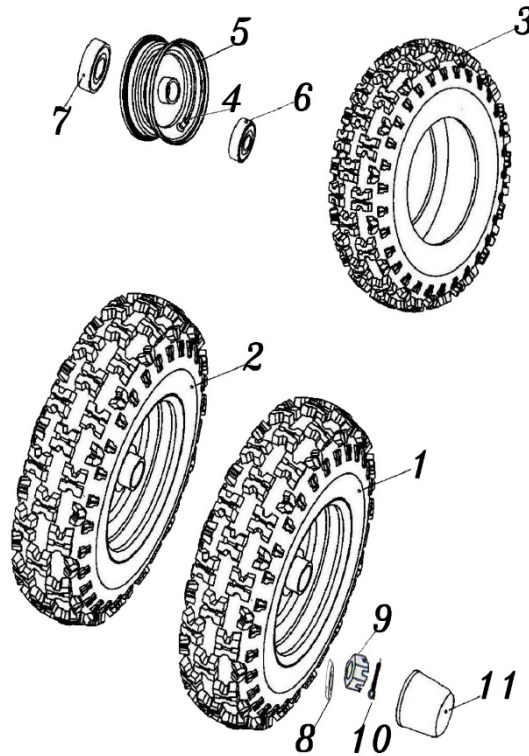
SPINDLE AND STRUT SUPPORT			
REF NO.	PART NO.	DESCRIPTION	QTY
4-1	44220-K1P	SPINDLE AND STRUT SUPPORT,R	1
4-2	61871000012505	GB6187 UNT.M10*1.25	2
4-3	97001000000005	GB97 WASHER φ10	2
4-4	7020061080G000	BALL HEAD DUST SEAL	4
4-5	44210-K1P	SPINDLE AND STRUT SUPPORT,L	1
4-6	93001000000005	LOCK WASHER φ10 ,GB93	2
4-7	94571000012505	GB9457 FLANGE UNT.M10*1.25	2
4-8	GB912002500002	COTTER PIN Φ2.5x25	2
4-9	43100-K1P	CUSHION ASS'Y. FR.	2
4-10	57870803512505	BOLT M8X35 ,GB5787	4
4-11	61870800012505	LOCKING NUT M8, GB6187	4

FIG. 5 SUSPENSION ARM



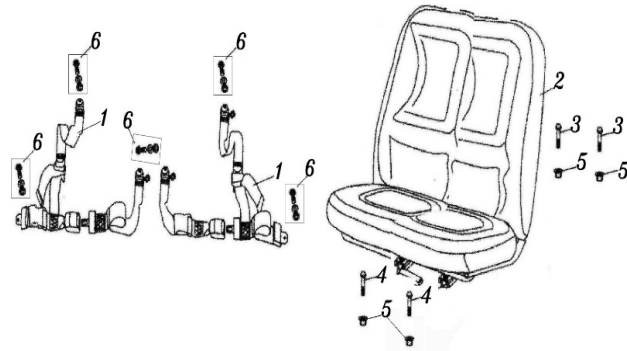
SUSPENSION ARM			
REF NO.	PART NO.	DESCRIPTION	QTY
5-1	57870809512505	GB5787 FLANGE BOLT M8*95	2
5-2	44217-K1P	UPPER SUSPENSION ARM COLLAR	2
5-3	7010003250G000	PEDAL BUSH	8
5-4	58210-K1P	UPPER SUSPENSION ARM	2
5-5	61870800012505	LOCKING NUT M8, GB6187	4
5-6	8010015250G000	UPPER SUSPENSION ARM COLLAR,80	2
5-7	58220-K1P	FRONT LOWER SUSPENSION ARM , L	1
5-8	57870810512505	GB5787 FLANGE BOLT M8*105	2
5-9	58230-K1P	FRONT LOWER SUSPENSION ARM , R	1

FIG. 6 FR.WHEEL ASSY.



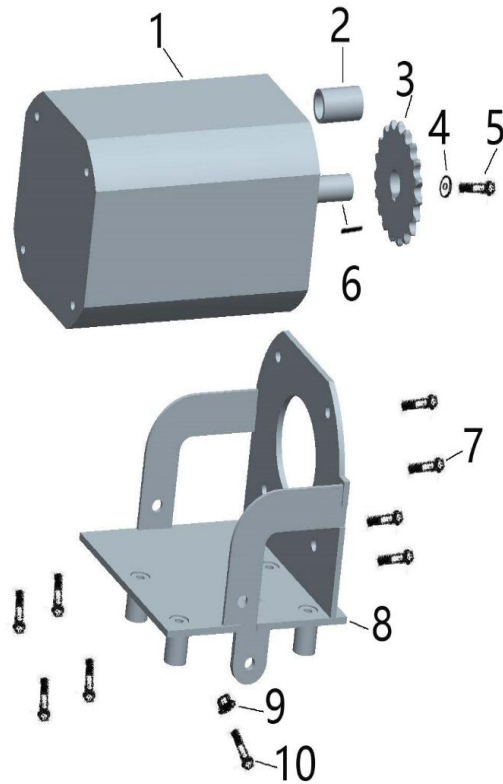
FR. WHEEL ASSY.			
REF NO.	PART NO.	DESCRIPTION	QTY
6-1	44100-K1P	FR.WHEEL ASSY.L. 145/70-6	1
6-2	44200-K1P	FR.WHEEL ASSY.R. 145/70-6	1
6-3	44031-K1P	TIRE, FR 145/70-6	2
6-4	44006-K5	TIRE NIPPLE	2
6-5	44110-K1P	RIM, FRONT WHEEL	2
6-6	62012RS0000000	BEARING 6201-2RS	2
6-7	62022RS0000000	BEARING 6202-2RS	2
6-8	97001200000005	WASHER ϕ 12 ,GB97	2
6-9	94571200012505	CASTLE NUT M12X1.25, GB9457	2
6-10	GB912502500002	COTTER PIN ϕ 2.5 \times 25, GB91	2
6-11	7020039250G001	HUB COVER (metal wheel)	2

FIG. 7 SAFETY BELT ASSY/SEAT COMP



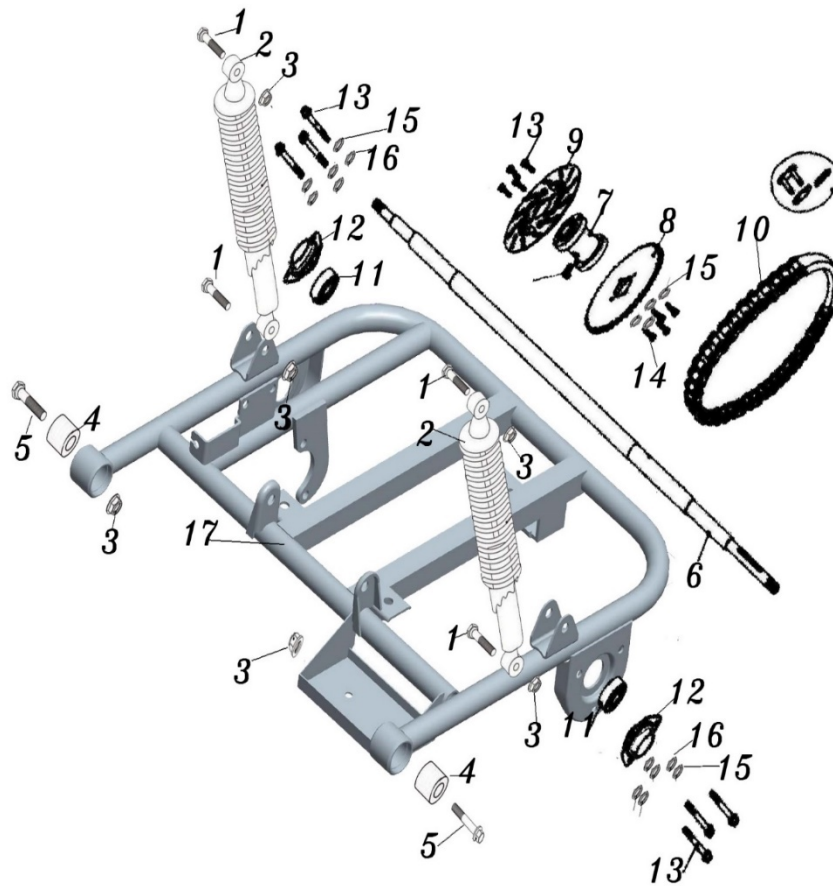
SAFETY BELT ASSY/SEAT COMP			
REF NO.	PART NO.	DESCRIPTION	QTY
7-1	51210-K1P	SAFETY BELT	2
7-2	61000-K1P	SEAT ASSY	1
7-3	GB370802012505	"T" BOLT M8*20,GB37	2
7-4	GB370803512505	"T" BOLT M8*35,GB37	2
7-5	61870800012505	LOCKING NUT M8, GB6187	4
7-6	9.700.001	SAFETY BELT SPECIAL BOLT	5

FIG.8 Electric motor and mount



Electric motor and mount			
REF NO.	PART NO.	DESCRIPTION	QTY
8-1	10010-K1PD	Electric motor	1
8-2	58345-K1PD	Sprocket 19T	1
8-3	54007-K1PD	Sprocket collar	1
8-4	GB96 φ6	WASHER φ6 ,GB96	1
8-5	GB5889 M6*16	BOLT M6*16 ,GB5789	1
8-6	PZ0606014	AXLE KEY 6*6*14	1
8-7	GB5787 M8*25	BOLT M8*25	8
8-8	96000800000005	WASHER φ8 ,GB96	8
8-9	93000800000005	LOCK WASHER φ8 ,GB93	8
8-10	58340-K1PD	Motor mount plate	1
8-11	GB5787 M8*80	BOLT M8*80	1
8-12	GB5783 M8	NUT M8	1

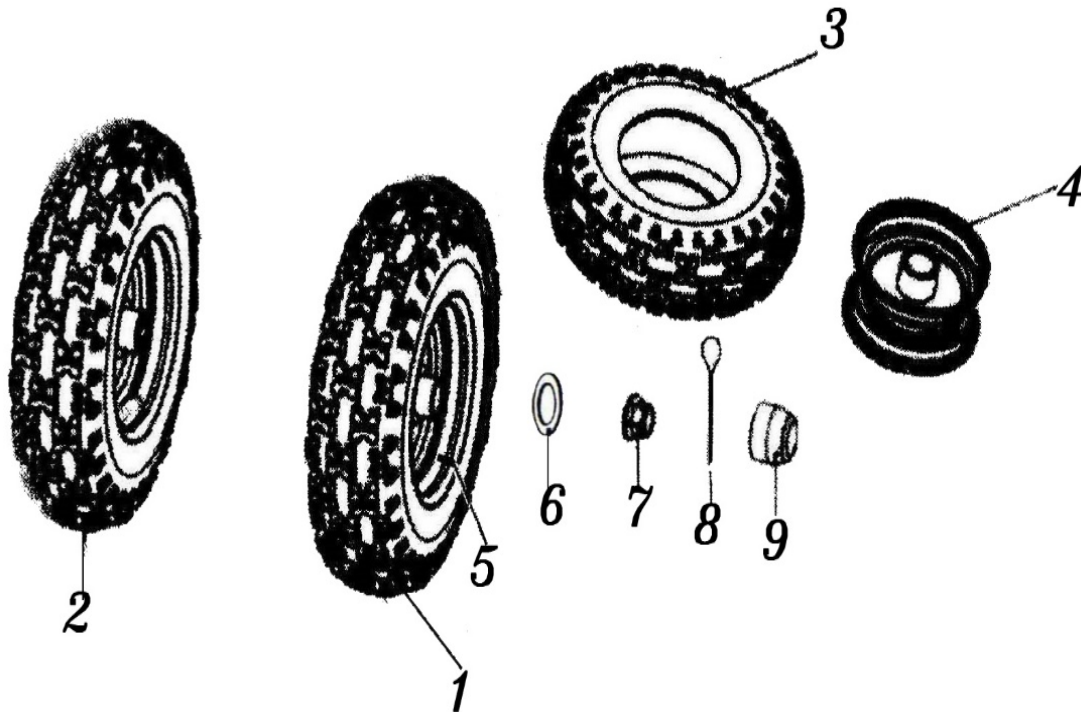
FIG. 9 Rear Swingarm



Rear Swingarm			
REF NO.	PART NO.	DESCRIPTION	QTY
9-1	57891004012505	BOLT M10×1.25×40	4
9-2	63100-K1P	CUSHION ASSY. RR	2
9-3	61871000012505	LOCKING NUT M10×1.25	6
9-4	7.020.077	SHOCK ABSORBING BUSHING φ10*φ30*30/35	2
9-5	57891006012505	BOLT M10*1.25*60,GB5789	1
9-6	60001-K1P	REAR AXLE	1
9-7	60003-K1P	REAR AXLE HUB	1
9-8	60006-K1PD	REAR SPROCKET (28T-420)	1
9-9	54007-YL	DISC BRAKE,RR	1
9-10	420-46	DRIVE CHAIN 420-46	1
9-11	60052RS0000000	BEARING 6005-2RS	2
9-12	8.020.115	AXLE COVER	2
9-13	57870801612505	BOLT M8*16,GB5787	10
9-14	57870802012505	BOLT M8*20,GB5787	4

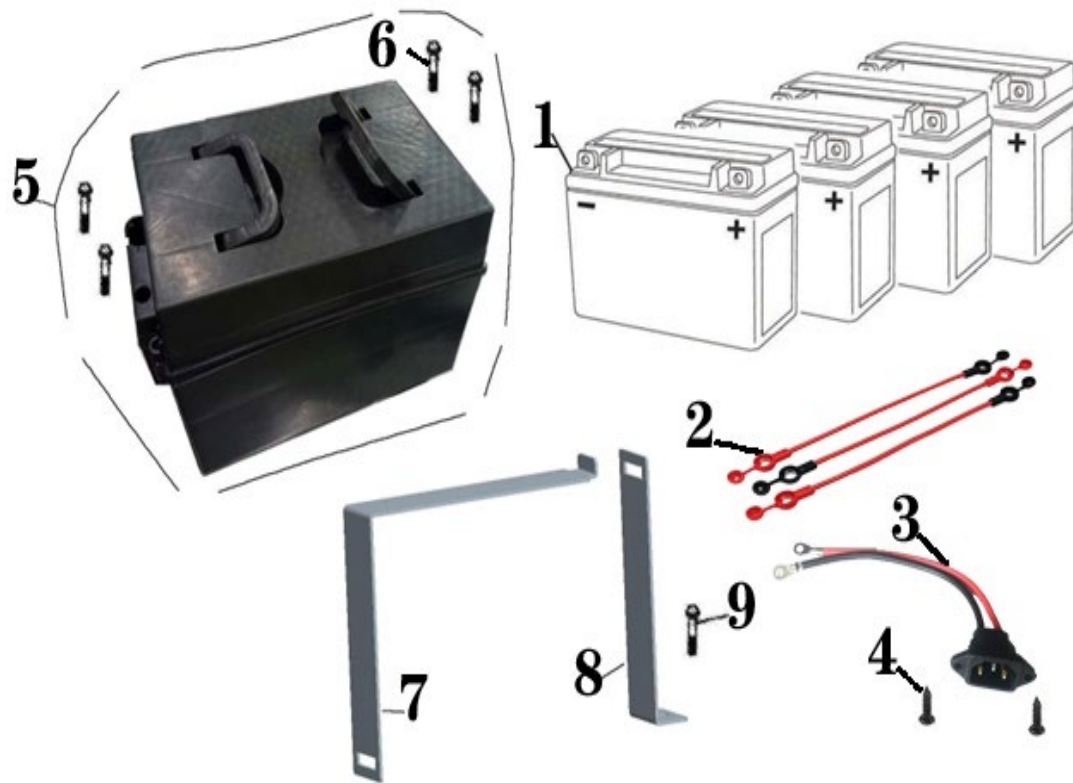
9-15	93000800000005	LOCK WASHER $\varphi 8$,GB93	10
9-16	96000800000005	WASHER $\varphi 8$,GB96	6
9-17	58310-K1PD	REAR SWING ARM	1

FIG. 10 Rear Wheel Assy.



Rear Wheel Assy.			
REF NO.	PART NO.	DESCRIPTION	QTY
10-1	54200-K1P	REAR WHEEL ASS Y.L	1
10-2	54100-K1P	REAR WHEEL ASS Y.R	1
10-3	54031-K1P	REAR TIRE 16x6-8	2
10-4	54110-K1P	RIM,REAR WHEEL	2
10-5	7190018250G000	TIRE NIPPLE	2
10-6	97001600000005	WASHER $\Phi 16 \times \Phi 40-3$	2
10-7	94571600015005	CASTLE NUT M16X1.5, GB9457	2
10-8	GB914004000002	COTTER PIN $\phi 4 \times 30$, GB91	2
10-9	7020039250G001	HUB COVER (metal wheel)	2

FIG. 11 Battery and Electric Box



Battery and Electric Box			
REF NO.	PART NO.	DESCRIPTION	QTY
11-1	BA-Cheetah i6	Battery	4
11-2	BAC-Cheetah i6	Battery cable	3
11-3	BABC-Cheetah i6	Battery Charging cable	1
11-4	GB845 ST4.2x16	Screw	2
11-5	EB-Cheetah i6	Electric box 48V20Ah	1
11-6	GB818 M6x25	GB818 M6x25 screw	4
11-7	58354-K1PD	Securing bracket 1	1
11-8	58355-K1PD	Securing bracket 2	1
11-9	57870602512505	BOLT M6X25 ,GB5787	4

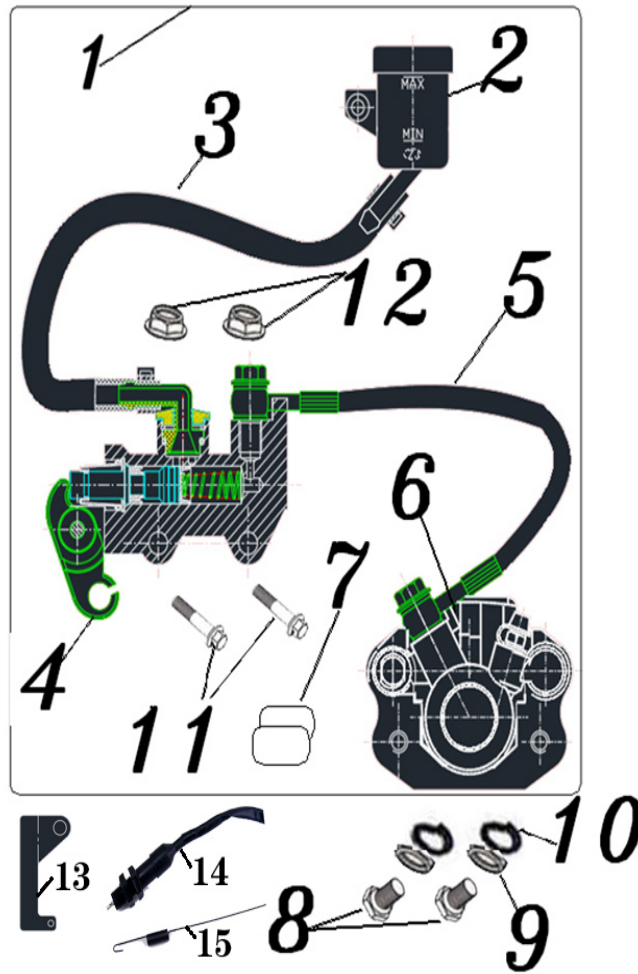
FIG. 12 Electrical Parts



Battery and Electric Box			
REF NO.	PART NO.	DESCRIPTION	QTY
12-1	8035-K5	Ignition switch	1
12-2	80010-K1P	headlamp switch (1021)	1
12-3	E80020-K1P	Speed switch (3 speeds)	1
12-4	E80030-K1P	Reverse switch	1
12-5	E80040-K1P	Wire harness cheetah i6	1
12-6	E80050-K1P	Power cable	1
12-7	E80070-K1P	40A 1P air switch	1
12-8	GB818 M3*25	GB818 M3*25 Screw	2
12-9	E80090-K1P	Cable	1
12-10	E80100-K1P	Connection box	1
12-11	GB819 M4*16	GB819 M4*16 Screw	2
12-12	GB819 M4*25	GB819 M4*25 Screw	2

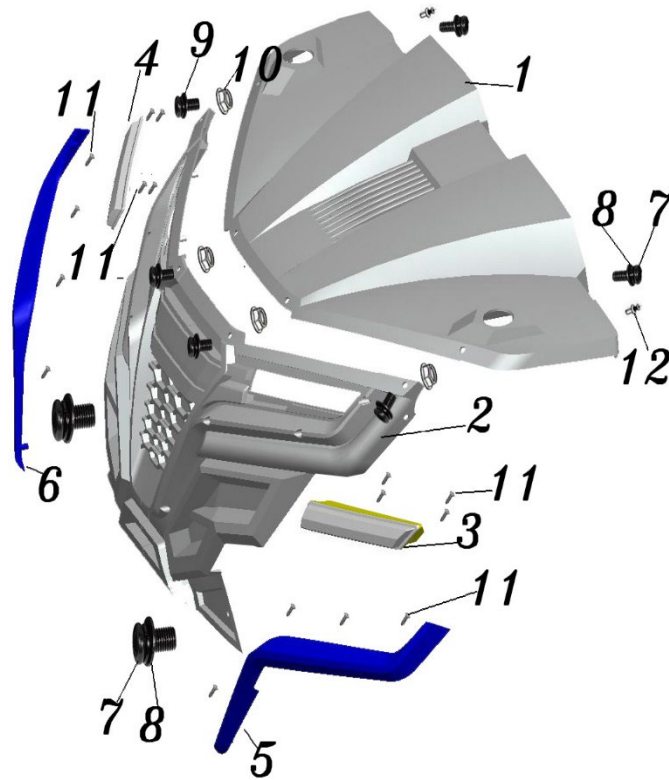
12-13	E80130-K1P	Controller	1
12-14	GB9074.8 M6*12	GB9074.8 M6*12 bolt	2
12-15	GB6170 M5	Nut M5	6
12-16	GB93 ϕ 5	GB93 ϕ 5 washer	6
12-17	E80170-K1P	Throttle pedal	1
12-18	GB6187 M8	GB6187 M8 nut	2
12-19	E80190-K1P	GB5787 M8*16 bolt	2
12-20	E80200-K1P	Voltage/Power Meter	1
12-21	E80210-K1P	Electrical parts mounting plate	1
12-22	E80220-K1P	Rubber cushion	1
12-23	E80230-K1P	M4 nut	2

FIG. 13 Brake System



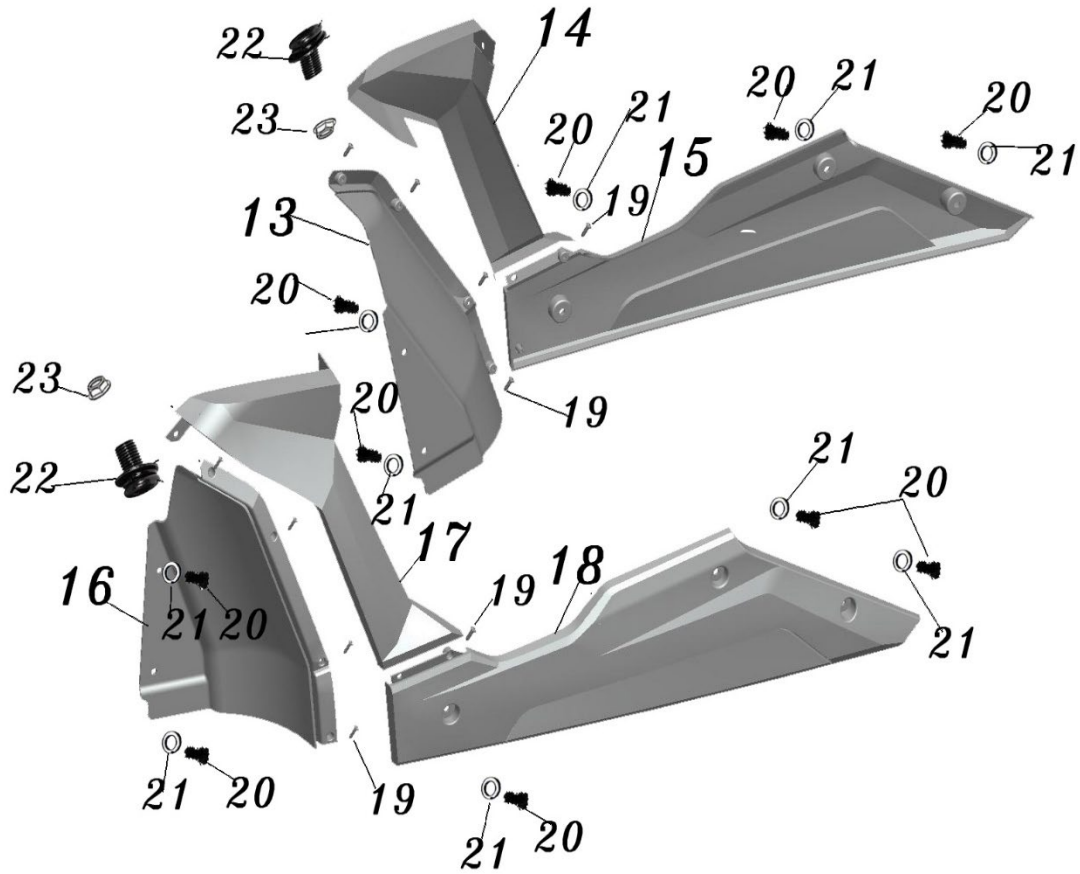
Brake System			
REF NO.	PART NO.	DESCRIPTION	QTY
13-1	54200-K1P	BRAKE ASSY.	1
13-2	54230-K1P	Oil cup.Brake	1
13-3	54240-K1P	Hose assy. Oil cup	1
13-4	54210-K1P	BRAKE MASTER CYLINDER	1
13-5	54220-K1P	HOSE ASSY.BRAKE 110mm	1
13-6	6.000.028	BRAKE CALIPER	1
13-7	7.020.016	BRAKE CALIPER PAD SET	1
13-8	57870801612505	BOLT M8X16 ,GB5787	2
13-9	93000800000005	LOCK WASHER φ8 ,GB93	2
13-10	97000800000005	WASHER φ8 ,GB97	2
13-11	57870802512505	BOLT M8X25 ,GB5787	2
13-12	61870800012505	LOCKING NUT M8, GB6187	2
13-13	59010-K1P	Brake switch spring mounting plate	1
13-14	59020-K1P	Brake light switch	1
13-15	59030-K1P	Brake light switch spring	1

FIG. 14 Plastic Body 1



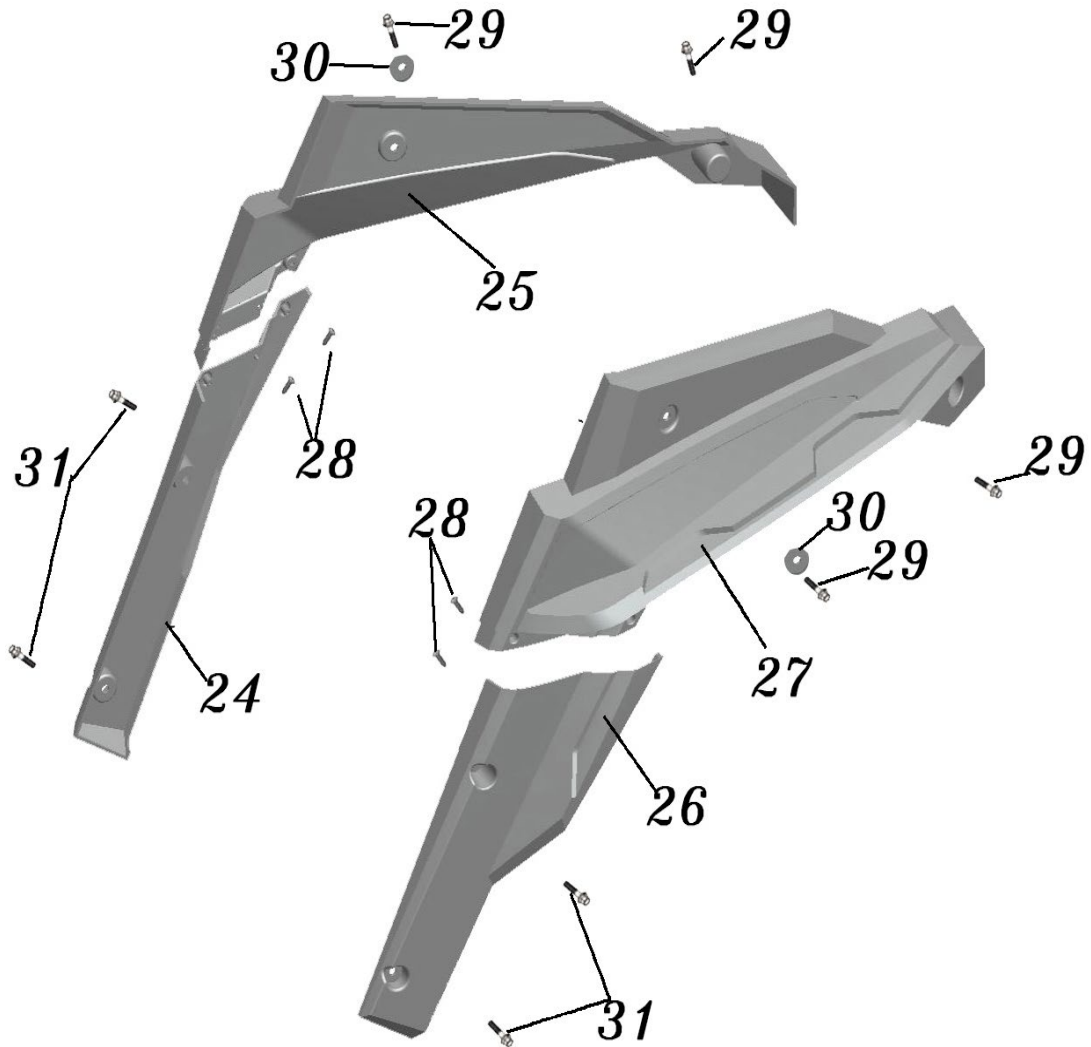
Plastic Body 1			
REF NO.	PART NO.	DESCRIPTION	QTY
14-1	65104-K1P	cover	1
14-2	65103-K1P	Front cover	1
14-3	81300-K1P	Headlights(L)	1
14-4	81100-K1P	Headlights(R)	1
14-5	65101-K1P	Decorative parts(L)	1
14-6	65102-K1P	Decorative parts(R)	1
14-7	57890601210005	BOLT M6X12 ,GB5789	4
14-8	96000600000005	WASHER $\phi 6$,GB96	4
14-9	90746601610005	BOLT M6X16 ,GB9074.6	4
14-10	61770600012505	NUT M6, GB6177	4
14-11	84503001000005	BOLT ST3*10 ,GB845	16
14-12	9.116.006	BULGE BOLT $\phi 6$	2

FIG. 14 Plastic Body 2



Plastic Body 2			
REF NO.	PART NO.	DESCRIPTION	QTY
14-13	65105-K1P	Front under cover (FR)	1
14-14	65108-K1P	Right above cover (FR)	1
14-15	65109-K1P	Right cover	1
14-16	65106-K1P	Front under cover(L)	1
14-17	65107-K1P	Left above cover (FR)	1
14-18	65110-K1P	Left cover	1
14-19	84503001000005	BOLT ST3*10 ,GB845	10
14-20	57890601210005	BOLT M6X12 ,GB5789	10
14-21	96000600000005	WASHER φ6 ,GB96	10
14-22	90746601610005	BOLT M6X16 ,GB9074.6	2
14-23	61770800012505	NUT M6, GB6177	4

FIG. 14 Plastic Body 3



Plastic Body 3			
REF NO.	PART NO.	DESCRIPTION	QTY
14-24	65111-K1P	Rear under right cover	1
14-25	65113-K1P	Rear above right cover	1
14-26	65112-K1P	Rear under Left cover	1
14-27	65114-K1P	Rear above Left cover	1
14-28	84503001000005	BOLT ST3*10 ,GB845	4
14-29	57890601210005	BOLT M6X12 ,GB5789	4
14-30	960006000000005	WASHER φ6 ,GB96	2
14-31	57890600810005	BOLT M6X8 ,GB5789	4

FIG. 15 Stickers and Manual

Stickers and Manual			
REF NO.	PART NO.	DESCRIPTION	QTY
15-1	90720-K1P	Warning decals	1
15-2	90730-K1P	Type of decal	1
15-3	90772-K1P	Owner' s Manual	1